

# Lutron Stairwell LED Fixtures

Wireless, occupancy based solutions



Stairwell LED fixture



Radio Powr Savr™  
wireless wall-mount  
occupancy sensor

Lutron's stairwell LED fixtures reduce lighting energy usage by automatically adjusting light output based on stairwell occupancy. This flexible and easy-to-install solution is ideal for stairwells, corridors, and storage rooms.

## Benefits

- Flexible install with wireless sensing
- Architectural design with diffused LEDs
- Up to 80% energy savings
- Design Lights Consortium (DLC) compliant
- Under 4 year payback
- Meets or exceeds energy codes and standards

## Features

- 80% occupied / 20% unoccupied
- 4000K color temperature
- 100 lumens/watt (1500-4000 lumens)

## How to Order

1. Determine number of fixtures needed
2. Choose stairwell model number
  - FXSWLX4H** – 4' High Power 40W fixture
  - FXSWLX4L** – 4' Low Power 20W fixture
  - FXSWLX2H** – 2' High Power 30W fixture
  - FXSWLX2L** – 2' Low Power 15W fixture
3. Add occupancy sensors (sold separately)  
**LRF2-OWLB-P-WH** (wall mount)
4. Contact Fixtures customer service for pricing and/or ordering at [fixtures@lutron.com](mailto:fixtures@lutron.com); or **610.282.7472**

# Stairwell LED Fixtures

## 1 Flexible Install with wireless sensing

**Field adjustable  
occupied and  
unoccupied levels**



Stairwell fixture



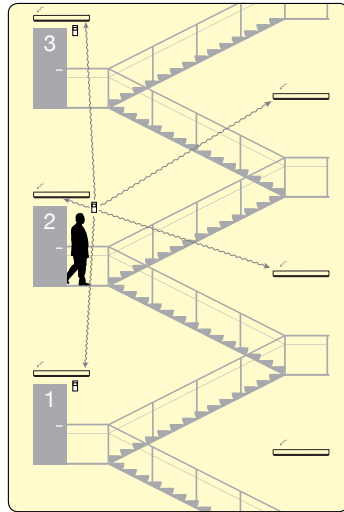
Radio Powr Savr™  
occupancy sensor  
(wall mount)



Lutron® Clear Connect®  
Wireless Signal **Sent**



Lutron® Clear Connect®  
Wireless Signal **Received**

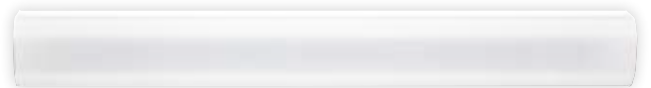


## 2 Architectural design with diffused LEDs

**Before**



**After**



## 3 Up to 80% Energy Savings

Potential savings for different scenarios listed below. The savings are based on the proposed Lutron solution operating at high end (80%) for 6 hours a day and low end (20%) during the remaining hours. Actual savings may vary based on project. Ensure replacement fixture meets the required light levels.

Proposed	Existing (24 hours of use)	
	T12 – 80W	T8 – 64W
LED (80/20%) 40W	82%	78%
LED (80/20%) 20W	82%	77%

## 4 DLC Compliant

Lutron stairwell LED fixtures are now listed on the DesignLights Consortium Qualified Product List.

[www.designlights.org/qpl](http://www.designlights.org/qpl)

Up to \$75 per fixture rebates are available.

For more information visit

[www.lutron.com/incentive](http://www.lutron.com/incentive).



## 5 Under 4 Year Payback

Payback based on replacing a 4ft T12 fixture (2-40W lamps at 100% output), with a 4ft LED Lutron stairwell solution (40W at 80% high-end output, 20% low-end output). Savings based on existing system operation of 8760 hours annually. Replacement system operation is based on 25% occupancy. Payback based on material cost with a 40% discount from list price, a rebate of \$15 per fixture, and \$0.15/kWh electricity rate. Actual savings may vary based on existing fixture wattage and stairwell occupancy. Note: Ensure replacement fixture meets the required light levels. Go to [www.lutron.com/references](http://www.lutron.com/references) for more information.

## 6 Meets or Exceeds Codes and Standards



- ASHRAE 90.1 2010 Additional Control (9.4.1.6)
- IgCC (International Green Construction Code Interior Light Reduction Controls (609.3)
- ADA (Americans with Disabilities Act)
- NFPA (National Fire Protection Association)
- TAA (Trade Agreements Act)



[www.lutron.com/fixtures](http://www.lutron.com/fixtures)

For 24/7 technical support, 8ft, vandal, 347V, 3500K and custom options contact fixtures customer service (610.282.7472).