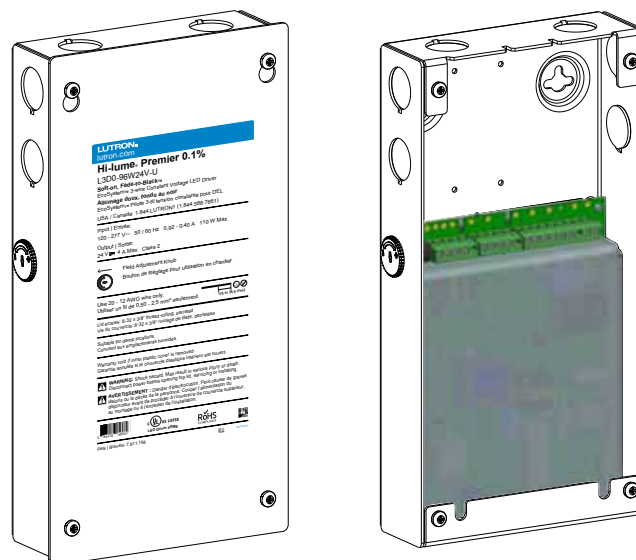


Hi-lume® Premier 0.1% EcoSystem™/3-wire Constant Voltage 24 V $\overline{\text{DC}}$ LED Driver with Soft-on, Fade-to-Black™

The Hi-lume® Premier 0.1% Constant Voltage Driver (L3D0) is a high-performance LED driver capable of controlling up to 96 W of 24 V $\overline{\text{DC}}$ constant voltage loads. This driver provides smooth and continuous dimming down to 0.1% low-end. It is ideal for use with strip lighting in applications such as coves, under or over cabinet lighting and pathway lighting. The driver is UL® Listed with an integrated wiring compartment.

Features

- Continuous, flicker-free dimming from 100% to 0.1%¹.
- Soft-on, Fade-to-Black™ operation for EcoSystem™ controls: fades smoothly between 0% and 0.1% when turned on and off for an incandescent like experience.²
- PWM dimming meets IEEE1789 over the entire dimming range.
- UL® Listed for United States and Canada (cULus®).
- Field Adjustment Knob offers customer low-end light output tuning for better fixture-to-fixture matching.
- Guaranteed dimming performance when used with Lutron® controls:
 - HomeWorks® QS, Energi Savr Node™ units with EcoSystem™, GRAFIK Eye® QS with EcoSystem™, PowPak® dimming module with EcoSystem™, PowPak® wireless fixture control with EcoSystem™, and Quantum® systems, allowing for integration into a planned or existing EcoSystem™ lighting control solution.
 - Lutron® 3-wire controls and interfaces.
- Protected from miswires of input power, up to 277 V \sim , to EcoSystem™ control inputs.
- Rated lifetime of 50,000 hours at 40 °C (104 °F) ambient temperature.
- FCC Part 15 compliant for commercial applications at 120–277 V \sim and residential applications at 120 V \sim .



Hi-lume® Premier 0.1% Constant Voltage Driver (L3D0)
5.5 in (140 mm) W x 2.0 in (51 mm) H x 10.5 in (267 mm) L

- 100% end-of-line performance tested at factory.
- RoHS compliant.
- Restores all settings after power failure.
- Barrier provided for Class 2 separation in the wiring compartment.
- Redundant connections on line and control terminals for easy daisy chain wiring.
- For more information please visit: www.lutron.com

¹ Light output at 0.1% depends on installation and light engine efficacy.

² Soft-on, Fade-to-Black™ is not available for 3-wire controls.

LUTRON® SPECIFICATION SUBMITTAL

Page

Job Name:

Model Numbers:

Job Number: