

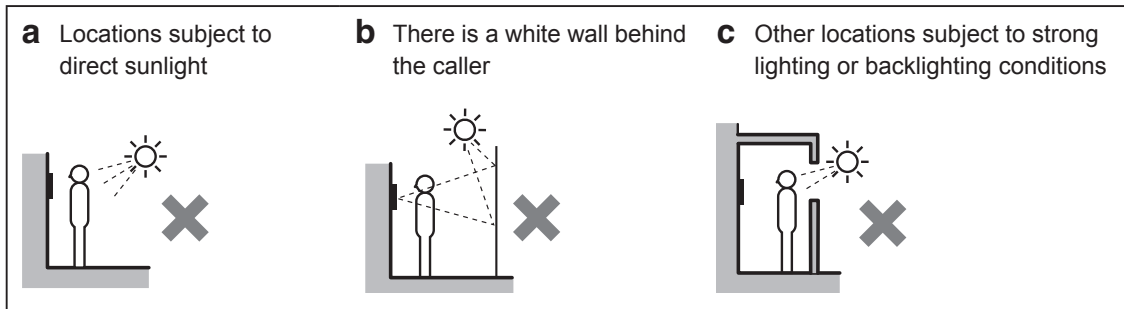
Vandal-resistant video door station (IS-DV, IS-DVF), Vandal-resistant audio door station (IS-SS)

Accessories

- Screw (for wall-mounting) × 4 (IS-DV only)
- Anchor × 4 (IS-DV only)
- Transparent name plate × 2 (IS-DV and IS-DVF only)
- Special screw × 4 (IS-DVF and IS-SS only)
- Special screwdriver × 1
- Back box × 1 (IS-DVF and IS-SS only)
- China RoHS paper × 1

Mounting locations (IS-DV and IS-DVF)

Do not install this unit in any of the following locations where lighting or the ambient environment could impact the display on the video monitor due to the characteristics of the door station's camera.



Mounting positions and image view area of video door station (IS-DV and IS-DVF)

◇ Wide picture

◆ Objects appear smaller due to greater distortion in the surrounding sections compared to the central section, but a wider area is displayed. The display range is a rough estimation and may change due to the installation environment.

◇ Zoom picture

◆ The zoom position can be changed. (Refer to the OPERATION MANUAL.) The factory setting is "Center" for Zoom mode.

◇ Wide picture

Up/Down

Mounting position 1,500 mm (5')

Approx. 2,050 mm (6' 9")

Approx. 1,050 mm (3' 5")

Approx. 1,000 mm (3' 4")

Unit center

1,500 mm (5')

500 mm (20")

Mounting position 1,300 mm (4' 3")

Approx. 1,850 mm (6' 1")

Approx. 1,050 mm (3' 5")

Approx. 800 mm (2' 7")

Unit center

1,300 mm (4' 3")

500 mm (20")

Left/Right

Approx. 170°

500 mm (20")

◆ An area over a range of approx. 170° in a 500 mm (20") radius from the camera displays. (The display range is a rough estimation and may change due to the installation environment.)

◇ Zoom picture (when mounting position is 1,500 mm (5'))

Up/Down

Zoom <Up>

Approx. 2,300 mm (7' 7")

Approx. 850 mm (2' 9")

Approx. 1,450 mm (4' 9")

Unit center

1,500 mm (5')

500 mm (20")

Zoom <Center>

Approx. 1,900 mm (6' 3")

Approx. 700 mm (2' 3")

Approx. 1,200 mm (3' 11")

Unit center

1,500 mm (5')

500 mm (20")

Zoom <Down>

500 mm (20")

Approx. 1,600 mm (5' 4")

Approx. 850 mm (2' 9")

Approx. 750 mm (2' 5")

Unit center

1,500 mm (5')

Left/Right

Zoom <Left>

500 mm (20")

Approx. 100 mm (4")

Approx. 1,300 mm (4' 3")

Zoom <Center>

500 mm (20")

Approx. 900 mm (3')

Zoom <Right>

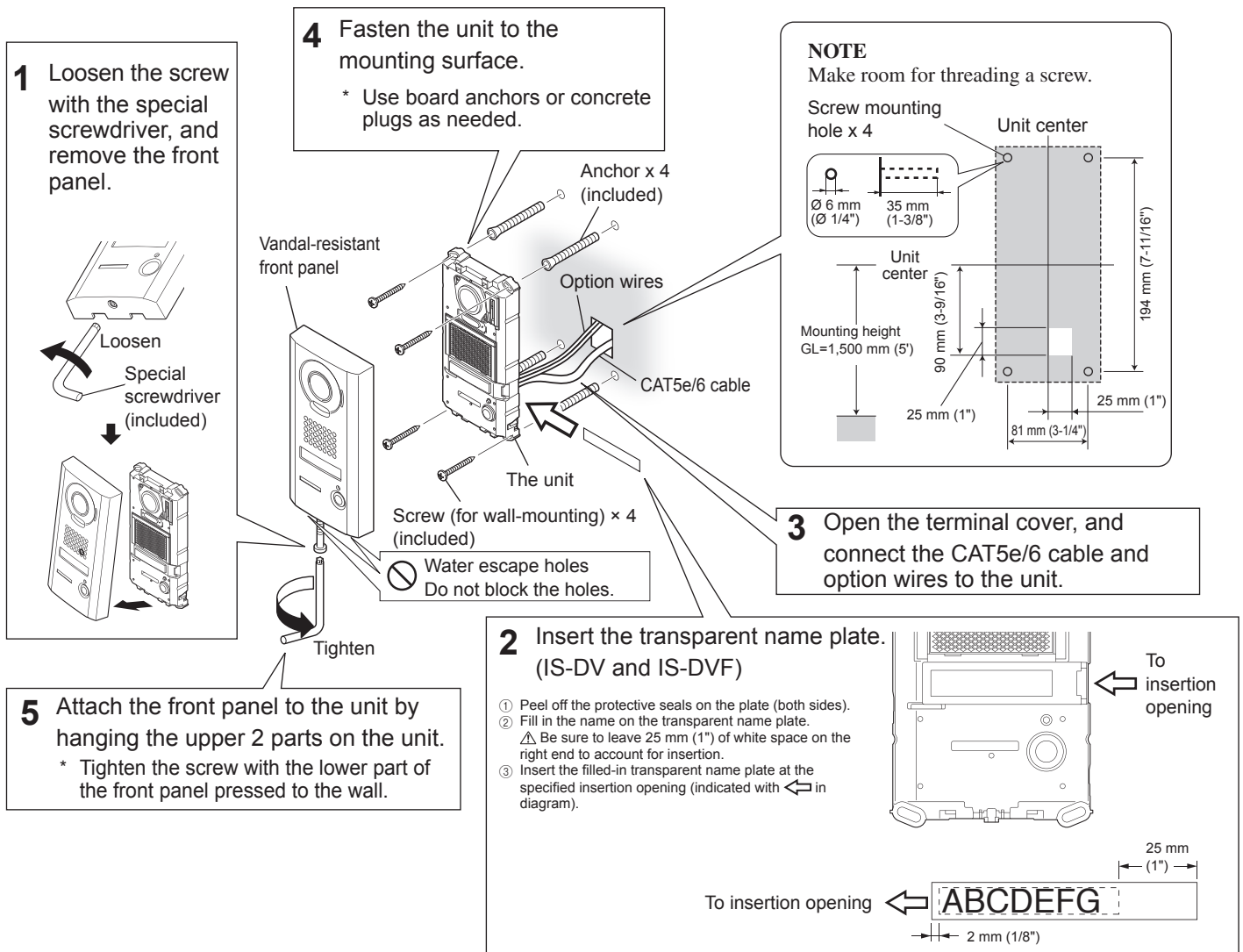
500 mm (20")

Approx. 100 mm (4")

Approx. 1,300 mm (4' 3")

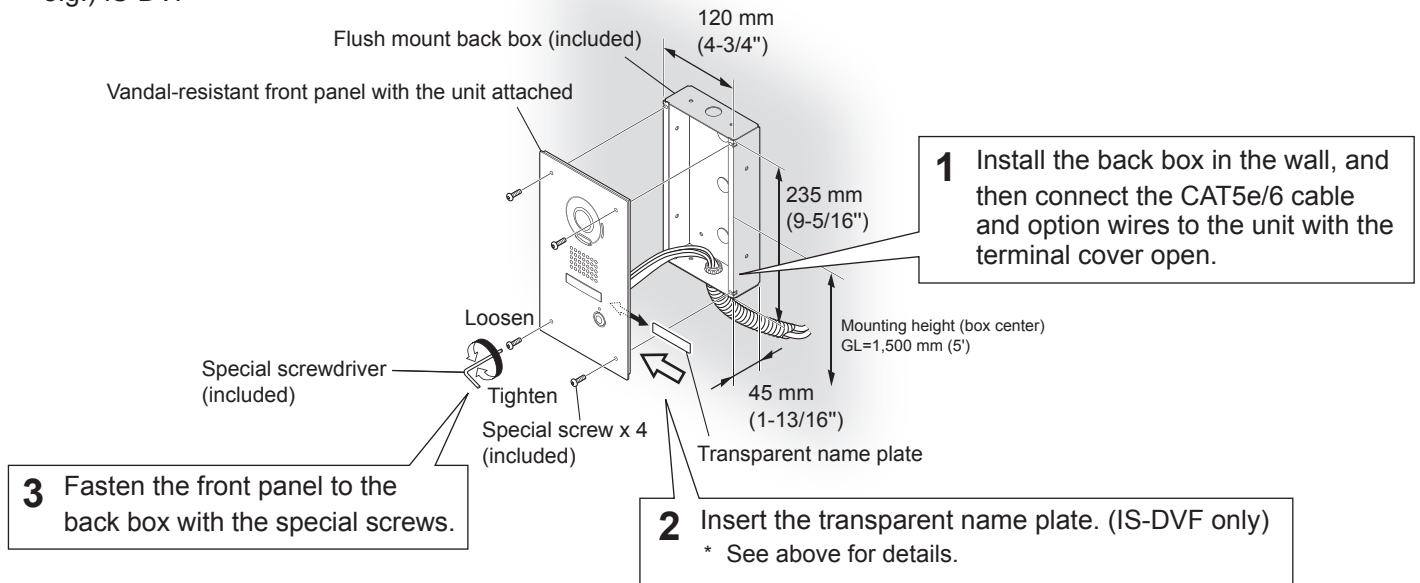
■ Mounting

IS-DV (surface-mount)

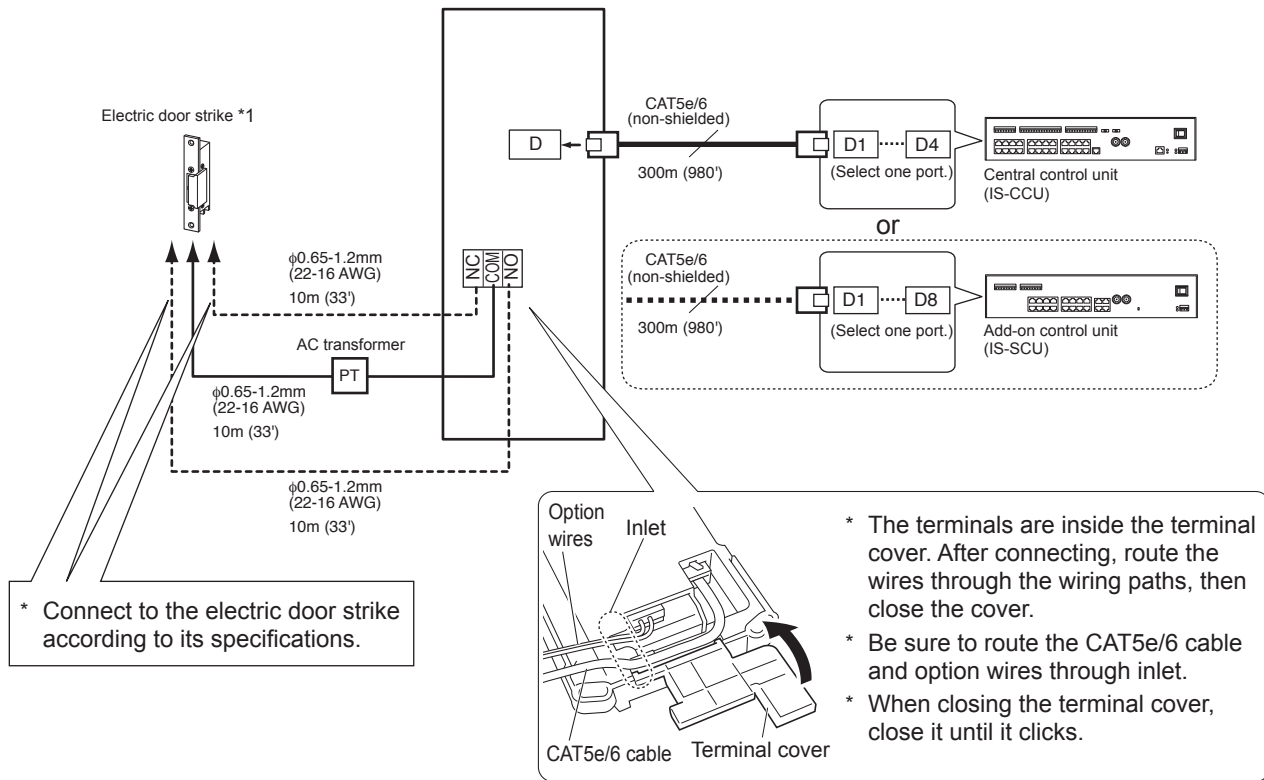


IS-DVF (flush-mount), IS-SS (flush-mount)

e.g.) IS-DVF



■ Connections (IS-DV and IS-DVF)



*1: Output specifications

Output method	N/O or N/C dry closure contact
Voltage between terminals	24V AC, 0.5A (resistive load) 24V DC, 0.5A (resistive load) Minimum overload (AC/DC): 100mV, 0.1mA

NOTES:

- Do not use the unoccupied terminals and ports for other purposes.
- In order to prevent miswiring, label both ends of each cable with the unit and terminal names to which they are to be connected.
- For connecting other manufacturer's products, refer to the instruction manuals for those products.
- The illustration of the unit's rear panel differs from the actual one. This is for simplifying the connection diagram.