

### SITE-MANAGEMENT SYSTEM TERMINAL

Site-Management is the System Management Terminal software package used for centralised display, logging and reporting of alarms/calls and all other system events on an Austco MC-4x20 nurse/staff call system. Typically used for administrative reporting and for system management purposes, Site-Management is installed on a dedicated PC typically located in an administration office and connected to the Ethernet LAN of a networked MC-4x20 nurse/staff call system.

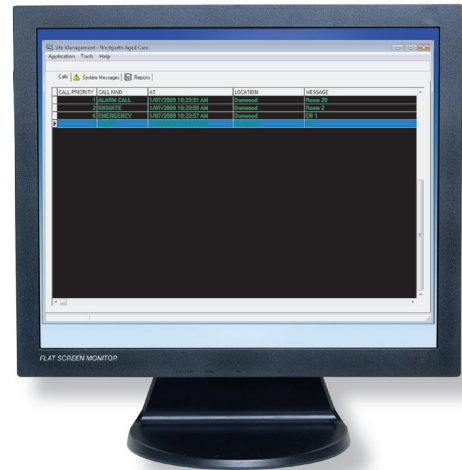
Site-Management is also configured to use a serial input port on the PC for integration with a single stand-alone nurse/staff station.

The Site-Management System Terminal provides the following main functions:

- Displays all active nurse call alarms and system error messages on the computer monitor.
- Logs all alarms/calls and events on the nurse call system.
- Provides menus to easily select, sort and produce date & time stamped reports on screen, to printer and/or for export to other PCs.
- Archives past logs.

(Site-Management also incorporates the configuration functions of Site-Config to provide a centralised point for on-site programming and downloading of site configuration tables to all MC-4x20 nurse/staff stations connected to the network.)

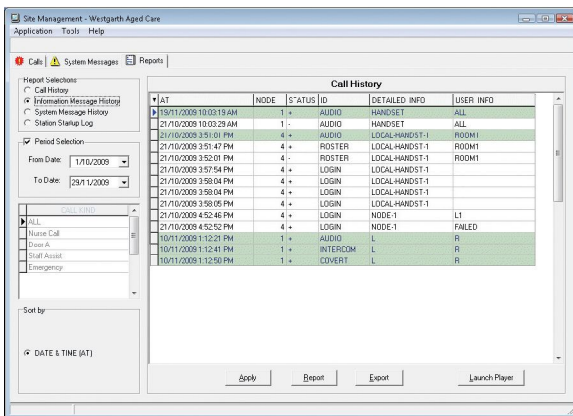
### CENTRAL LOGGING & REPORTING



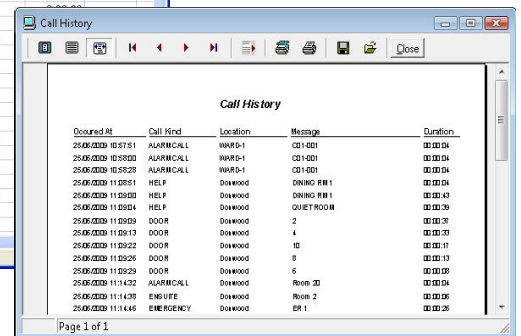
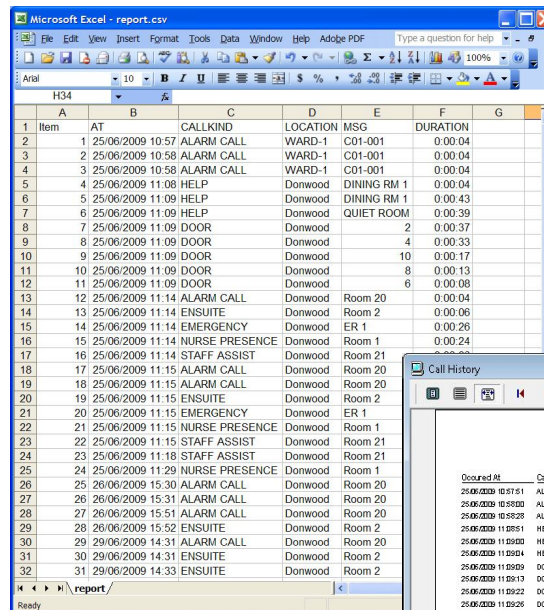
SITE-MANAGEMENT SYSTEM TERMINAL

*Example of Alarm History Report. Reports can be selected and sorted as required according to;*

- Date
- Time
- Call Type/Priority
- Location
- Duration



*Centralised display of all active alarms/calls in chronological order.*



**Microsoft Windows based**

### Ordering Information

Code	Description	Order Options
Site-Management/n	System Management Terminal Software	/n Specifies no. of nurse/staff stations