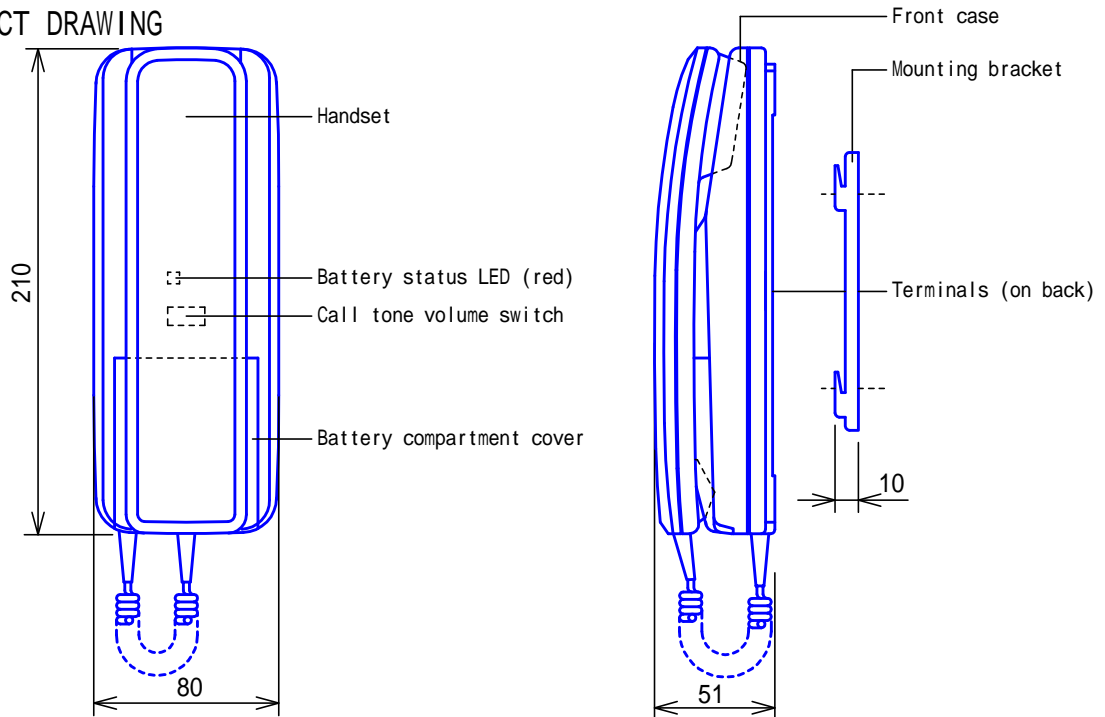
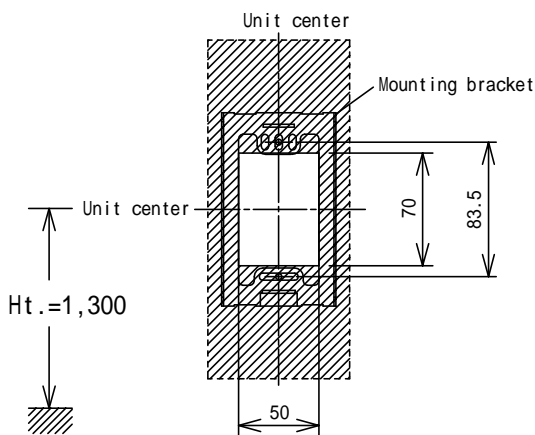


PRODUCT DRAWING

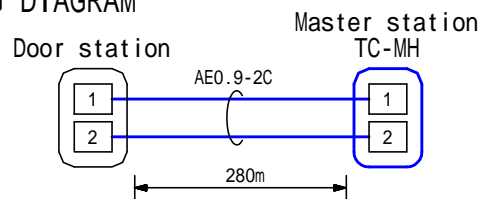


MOUNTING



* Mounting bracket; Single-gang 83.5mm guided

WIRING DIAGRAM



RESTRICTIONS

The door station connectable is TC-DC only.
TC-MH can not be used on desk-top.

FUNCTIONS

Receiving a call from Door station and entering communication by lifting handset.
Battery status LED. It goes off when batteries are exhausted.

SETTING

Adjusting call tone volume (sliding)
..... With call tone volume switch

SPECIFICATIONS

Power source	6V DC. Four SUM-3 batteries.
Type of communication	Handset simultaneous communication
Battery life	One year(approx.). Under use of 5 sec. in calling, 20 sec. in communication, 10 times a day.
Door station	One unit
Call tone	2-tone chime
Mounting	Surface wall mount
Electrical box	Single-gang box
Housing	HIPS plastic
Weight	420g(approx.) (excl. Batteries)
Unit color	Snow white

DESCRIPTION	FIG. NAME	UNIT	DATE
MASTER STATION (TCS-MH set)	PRODUCT/SPECIFICATIONS/RESTR.	mm	11 March, 2002
MODEL NO.	FIG.NO.	PAGE	REVISION
TC-MH	TC-MH-1-1	1/1	1

AIPHONE