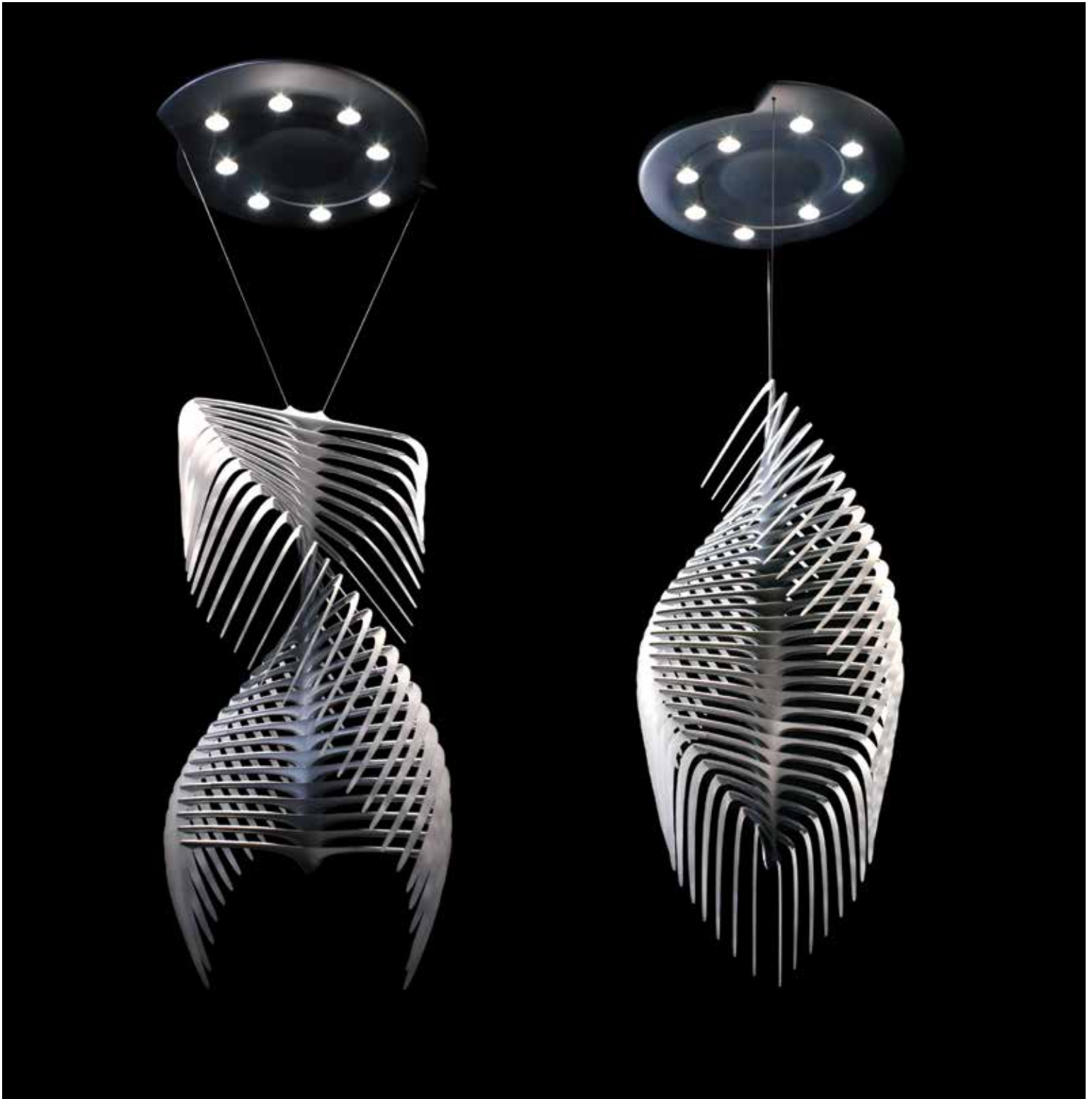




Daedalus

Designed by Audi Design
Center, California

The fixture is organized around two delicate curving lines described by the ribs of the central helix. The feathery quality of the glass blades inspired the name: Daedalus.



Daedalus pendant

5' long with a 17" wide glass-and-aluminum helical structure, direct light, suspended by aircraft cable from a 22" wide disk. Designed for use in ballrooms, lobbies, atriums, reception areas, galleries, and restaurants.

Above: Daedalus pendant with
Matte Titanium finish